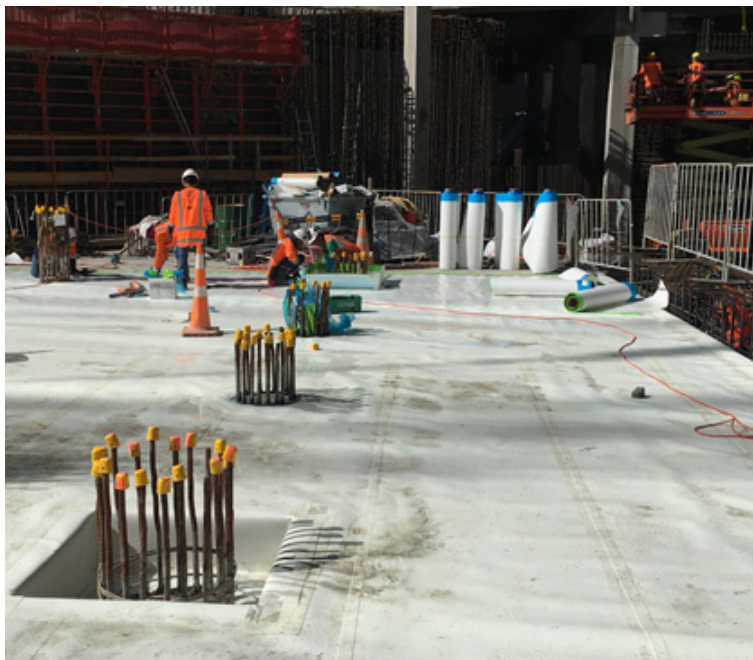


Auckland's Commercial Bay transforms the waterfront

Project	Commercial Bay project, Waitemata Harbour, Auckland, New Zealand
Developer	Precinct Properties
Construction & Engineering company	Sansom Construction Systems Ltd.
Design Consultant	Simpson Gumpertz & Heger (SG&H)
GCP Solutions	PREPRUFE® Plus, ZIPLAP™

Project

The 57,000-square-metre Commercial Bay project along the southern shore of the Waitemata Harbour in Auckland, New Zealand is set to be the largest mixed-use development in the city. Featuring a new 39-level office tower and 18,000 square metres of retail, Commercial Bay connects to an underground rail station and is expected to transform the waterfront from an aging mall into a hub for commerce, trade and transport.



"Time is important for us in construction," "The PREPRUFE® Plus system was easy and fast to install, especially when compared with competitors' systems. This was especially evident during bad weather periods when it was significantly faster to apply the PREPRUFE® Plus membrane than other underground waterproofing systems."

Elton Sturmfels, owner of Sansom Construction Systems Ltd.



With three basement levels more than 17 metres deep, the Commercial Bay project required a waterproofing solution that would work in a wet and muddy environment while addressing the complex architectural design. At the same time, the solution had to form a permanent, continuous seal against water and a barrier to resist the stress of ground settlement.

The new office tower was constructed among three existing buildings, making waterproofing a challenge due to the differential movement between buildings, which can damage the waterproofing if the design, or movement limiting structural designs, is not durable. Since the waterproofing application was scheduled to take place during winter, with its heavy rainfall and high chance of mud contamination, the specifier wanted a solution that would be unaffected by the climate, and would be fast and easy to install.

"Since its introduction in the 1990s, more than 65 million square metres of PREPRUFE® pre-applied waterproofing membranes have been installed and proven globally in a variety of climates and site conditions – from airports, museums, hospitals, stadiums to residential and commercial projects," "The speed and ease of installing the PREPRUFE® Plus system was why it was selected to protect the acclaimed Commercial Bay development, a banner project that is transforming the city of Auckland."

Scott Whitelaw, technical and applications manager, Australia and New Zealand, GCP Applied Technologies.

Given the specific requirements of the job, PREPRUFE®Plus pre-applied waterproofing membranes from GCP Applied Technologies (GCP) were selected to protect the project's basement and transport connection link. Sansom Construction Systems Ltd., a construction and engineering company, delivered the solution after consulting with the developer Precinct Properties.

Designed with ADVANCED BOND TECHNOLOGY™ and dual adhesive ZIPLAP™ seams, PREPRUFE®Plus membranes form a unique, integral bond to poured concrete. This integral bond provides a robust barrier to water, moisture and gas and prevents both the ingress and lateral migration of water. PREPRUFE®Plus membranes are unique composite sheets comprised of a durable and flexible backing membrane, pressure-sensitive adhesive and patented, weather-resistant protective coating.

Another benefit of the PREPRUFE®Plus products is their absence of a release liner. This enables more efficient and reliable installation. PREPRUFE®Plus products require minimal cleaning before concrete pouring – just a quick hose off. The pre-applied waterproofing membranes can be trafficked immediately after application and are ready for immediate placing of reinforcement. PREPRUFE®Plus membranes with ZIPLAP™ seams allow for an adhesive-to-adhesive bond at membrane sheet overlaps and deliver superior performance in harsh conditions, without the need for specialised equipment, heat or power.



Results

Simpson Gumpertz & Heger (SG&H), the structural design consultants on the Commercial Bay development, specified PREPRUFE®Plus waterproofing membranes because they have a proven track record globally and in New Zealand. On the Commercial Bay project, the PREPRUFE®Plus solution helped reduce installation time, cost and waste.

Unlike alternatives that require special heating equipment to weld laps together or detailing tape to seal the laps, the PREPRUFE®Plus membrane's easy roll and kick-out installation helped reduce installation time.

Adverse weather, mud contamination and delays to the construction schedule were major concerns for the developer, but since PREPRUFE®Plus membranes can be applied on damp surfaces, the development was able to meet a tight construction schedule. In addition, the ease of removing mud and water from the membranes' surfaces meant the contractor did not have to worry about contamination issues.

PREPRUFE®Plus membranes made waterproofing a complex design much easier and faster. GCP Applied Technologies worked closely with SG&H during the design phase to identify project detailing ahead of time to help accelerate the waterproofing installation. PREPRUFE®Plus waterproofing was applied to provide comparatively simple but positive detailing on a multitude of piles, tiebacks, ground anchors and around penetrations. In addition, SG&H and GCP implemented strong quality assurance processes to ensure best practices and high installation quality. The robust waterproofing solution also helped rectify damages by other trades, such as during the installation of reinforcement, to maintain waterproofing integrity.

North America customer service: 1-877-4AD-MIX (1-877-423-6491)

GCP Applied Technologies Inc., 2325 Lakeview Parkway, Alpharetta, GA 30009, USA

GCP Applied Technologies India Private Limited, Unit No. 208, Second Floor, Time Tower Building, Sector-28, MG Road, Gurugram, Haryana-122002, India

This document is only current as of the last updated date stated below and is valid only for use in India. It is important that you always refer to the currently available information at the URL below to provide the most current product information at the time of use. Additional literature such as Contractor Manuals, Technical Bulletins, Detail Drawings and detailing recommendations and other relevant documents are also available on www.gcpat.in. Information found on other websites must not be relied upon, as they may not be up-to-date or applicable to the conditions in your location and we do not accept any responsibility for their content. If there are any conflicts or if you need more information, please contact GCP Customer Service.

Last Updated: 2023-07-25

gcpat.in/about/project-profiles/auckland-s-commercial-bay-transforms-waterfront